

TECHLED

Techled Elektronik San. Tic. A.Ş.



2026

TechLED Lighting Systems

Ex-Proof Brochure

Simlified Brochure





EX-PROOF

The future is brighter with TechLED!

The importance of ecological values increases with increasing global warming and at the same time improper energy management, so that the support for savings measures has now become a priority issue in all areas.

TechLED differs from other manufacturers by the use of high-performance modules, reactors and COB-LED technology, as well as sequenced LEDs.

With many years of R&D studies and successful results in the testing phase, TechLED reaches the consumer in all areas that require high light output and opens new doors in the world of lighting.

We are proud to be able to offer you TechLED technology that protects the economy and the environment with its superior quality.

Why TechLED?

- TechLED offers high illumination at low energy consumption and there are no additional costs such as failure, repair, loss of time and work, as there are no light bulbs, ballasts, igniters or starters.
- At the first installation stage, significant savings are initially achieved.
- TechLED offers modern design, aluminum alloy housing with high impact resistance and scratch-resistant electrostatic painting.
- TechLED luminaires offer protection against energy fluctuations.
- TechLED offers optional, project-specific lighting applications.
- TechLED develops customer-specific products and solutions.



EX-PROOF



TL-EX-SR-XX

Specifications / Dimensions

Light Source	: SMD Power LED
Input Voltage	: 198 V - 264 V AC 50 Hz
Optional Input Voltage	: 24 VAC / VDC
Power Range	: 10 W - 55 W
Power Factor	: ≥ 95
Luminaire Efficiency	: 135-165 lm/W
Color Temperature	: 2700-6500 Kelvin
Lifespan	: >60.000 hours
Housing	: Special Aluminium Alloy
Operating Temp	: -40°C - +50°C
Cooling	: Specially Designed Cooling Panel
Light Distribution	: 30° - 60° - 90° - 120° - Diffuser Lens
Optic Interface	: Tempered Glass
Protection Class	: IP66
Impact Resistance Class	: Aluminum Housing: IK10 & Glass : IK08
Length	: 200 mm
Diameter	: 180 mm
Weight	: 3 kg



Zone 1
Zone 21

10-30W	30-55W
II 2GD Ex db IIC T6	II 2GD Ex db IIC T4
Gb Ex tb IIIC T6 Db	Gb Ex tb IIIC T4 Db



TL-EX-SR-XX COB

Specifications / Dimensions

Light Source	: COB LED
Input Voltage	: 198 V - 264 V AC 50 Hz
Optional Input Voltage	: 24 VAC / VDC
Power Range	: 10 W - 55 W
Power Factor	: ≥ 95
Luminaire Efficiency	: 135-165 lm/W
Color Temperature	: 2700-6500 Kelvin
Lifespan	: >60.000 hours
Housing	: Special Aluminium Alloy
Operating Temp	: -40°C - +50°C
Cooling	: Specially Designed Cooling Panel
Light Distribution	: 60° - 90° - 120° - Diffuser Lens
Optic Interface	: Tempered Glass
Protection Class	: IP66
Impact Resistance Class	: Aluminum Housing: IK10 & Glass : IK08
Length	: 200 mm
Diameter	: 180 mm
Weight	: 3 kg



Zone 1
Zone 21

10-30W	30-55W
II 2GD Ex db IIC T6	II 2GD Ex db IIC T4
Gb Ex tb IIIC T6 Db	Gb Ex tb IIIC T4 Db



EX-PROOF



TL-EX-MR-XXX

Specifications / Dimensions

Light Source	: SMD Power LED
Input Voltage	: 198 V - 264 V AC 50 Hz
Optional Input Voltage	: 24 VAC / VDC
Power Range	: 3-200 W
Power Factor	: ≥ 95
Luminaire Efficiency	: 135-165 lm/W
Color Temperature	: 2700-6500 Kelvin
Lifespan	: >60.000 hours
Housing	: Special Aluminium Alloy
Operating Temp	: -40°C - +50°C / +70°C
Cooling	: Specially Designed Cooling Panel
Light Distribution	: 30° - 60° - 90° - 120° - Diffuser Lens
Optic Interface	: Tempered Glass
Protection Class	: IP67
Impact Resistance Class	: Aluminum Housing: IK10 & Glass : IK10
Diameter	: 260 mm
Height	: 290 mm
Weight	: 8,5 kg



TL-EX-BR-XXX

Specifications / Dimensions

Light Source	: SMD Power LED
Input Voltage	: 198 V - 264 V AC 50 Hz
Optional Input Voltage	: 24 VAC / VDC
Power Range	: 3-250 W
Power Factor	: ≥ 95
Luminaire Efficiency	: 135-165 lm/W
Color Temperature	: 2700-6500 Kelvin
Lifespan	: >60.000 hours
Housing	: Special Aluminium Alloy
Operating Temp	: -40°C - +50°C / +70°C
Cooling	: Specially Designed Cooling Panel
Light Distribution	: 30° - 60° - 90° - 120° - Diffuser Lens
Optic Interface	: Tempered Glass
Protection Class	: IP67
Impact Resistance Class	: Aluminum Housing: IK10 & Glass : IK10
Diameter	: 300 mm
Height	: 290 mm
Weight	: 9 kg



EX-PROOF



Zone 1
Zone 21

II 2G Ex db IIB + H₂ T5 Gb
II 2D Ex tb IIIC T(95 °C) Db

TL-EX-BS-XXX

Specifications / Dimensions

Light Source	: COB LED
Input Voltage	: 100 V - 305 V AC 50 Hz
Optional Input Voltage	: 24 VAC / VDC
Power Range	: 50 W - 320 W
Power Factor	: ≥ 95
Luminaire Efficiency	: 135-165 lm/W
Color Temperature	: 2700-6500 Kelvin
Lifespan	: >60.000 hours
Housing	: Special Aluminium Alloy
Operating Temp	: -40°C - +50°C / +70°C
Cooling	: Specially Designed Cooling Panel
Light Distribution	: 12° - 19° - 22° - 29° - 38° - 46° - 72°
Optic Interface	: Tempered Glass
Protection Class	: IP67
Impact Resistance Class	: Aluminum Housing: IK10 & Glass : IK10
Length	: 495 mm
Width	: 458 mm
Height	: 151 mm
Weight	: 22 kg



Zone 2
Zone 21

II 3G Ex nR IIC T5 Gc
II 2D Ex tb IIIC T5 Db

TLP-P-EX-XXX

Specifications / Dimensions

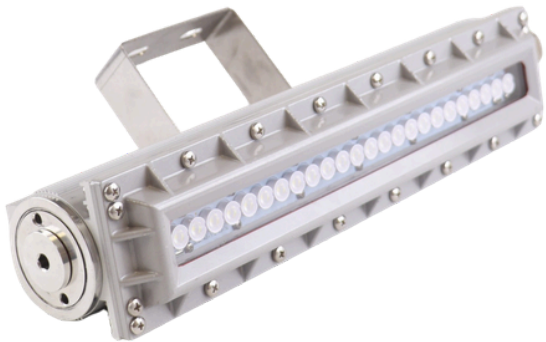
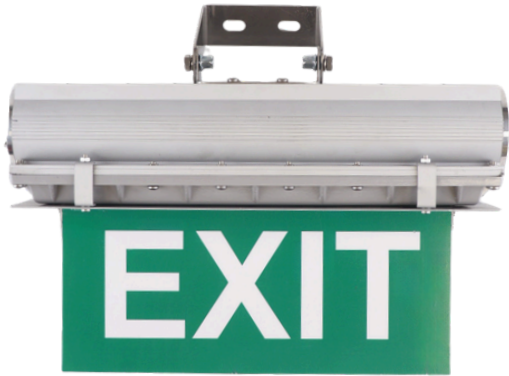
Light Source	: COB LED
Input Voltage	: 198 V - 264 V AC 50 Hz
Optional Input Voltage	: 24 VAC / VDC
Power Range	: 20-250 W
Power Factor	: ≥ 95
Luminaire Efficiency	: 135-165 lm/W
Color Temperature	: 2700-6500 Kelvin
Lifespan	: >60.000 hours
Housing	: Special Aluminium Alloy
Operating Temp	: -40°C - +50°C / +70°C
Cooling	: Specially Designed Cooling Panel
Light Distribution	: 12° - 19° - 22° - 29° - 38° - 46° - 72° or Symmetrical Wide Angle
Optic Interface	: Tempered Glass
Protection Class	: IP67
Impact Resistance Class	: Aluminum Housing: IK10 & Glass : IK07
Length	: 400 mm
Width	: 310 mm
Height	: 120 mm
Weight	: 5,5 kg



EX-PROOF

TL-EX-TLL-XXX-XXX

Specifications / Dimensions



Light Source	: SMD High Power LED
Input Voltage	: 198 V - 264 V AC 50 Hz
Optional Input Voltage	: 24 VAC / VDC
Power Range	: 5 - 85 W
Power Factor	: ≥ 95
Luminaire Efficiency	: 135-165 lm/W
Advanced Control	: DALI (optional)
Color Temperature	: 2700-6500 Kelvin
Lifespan	: >60.000 hours
Housing	: Special Aluminium Alloy
Operating Temp	: -40°C - +50°C
Cooling	: Specially Designed Cooling Panel
Light Distribution	: Optional (30° - 60° - 90° - 120°)
Optic Interface	: Tempered Glass (Clear/ Frosted)
Protection Level	: IP67
Impact Resistance Class	: Aluminum Housing: IK10 & Glass : IK07-IK08-IK09
Emergency Kit	: Optional (3 hours)
Trough Wiring	: Optional
Mounting Kit	: Wall, Ceiling, Poll Mounting Kit Options
Length	: 425 mm
Width	: 88 mm
Height	: 10 mm
Weight	: 4,5 kg



5-55W	56-85W	86-110W
II 2GD	II 2GD	II 2GD
Ex db IICT6 Gb	Ex db IICT5 Gb	Ex db IICT4 Gb
Ex tb IIIC T85°C Db	Ex tb IIIC T95°C Db	Ex tb IIIC T130°C Db





EX-PROOF



TL-EX-LNR-75

Specifications / Dimensions

Light Source	: SMD Power LED
Input Voltage	: 100 V - 305 V AC 50 Hz
Optional Input Voltage	: 20 - 75 W
Power Range	: ≥ 95
Power Factor	: 135-165 lm/W
Luminaire Efficiency	: 2700-6500 Kelvin
Color Temperature	: >60.000 hours
Lifespan	: Special Aluminium Alloy
Housing	: -40°C - +50°C / +70°C
Operating Temp	: Specially Designed Cooling Panel
Cooling	: 30° - 60° - 90° - 30°x70° - 60°x90° 70°x145°80°x155° - 90°x120°- 120°-140°
Light Distribution	: PC Block Lens
Optic Interface	: IP66
Protection Class	: Aluminum Housing: IK10 & Lens : IK09
Impact Resistance Class	: 329 mm
Length	: 143 mm
Width	: 167 mm
Height	: 2 kg
Weight	



TL-EX-LNR-150

Specifications / Dimensions

Light Source	: SMD Power LED
Input Voltage	: 100 V - 305 V AC 50 Hz
Power Range	: 75 - 150 W
Power Factor	: ≥ 95
Luminaire Efficiency	: 135-165 lm/W
Color Temperature	: 2700-6500 Kelvin
Lifespan	: >60.000 hours
Housing	: Special Aluminium Alloy
Operating Temp	: -40°C - +50°C / +70°C
Cooling	: Specially Designed Cooling Panel
Light Distribution	: 30° - 60° - 90° - 30°x70° - 60°x90° 70°x145°80°x155° - 90°x120°- 120°-140°
Optic Interface	: PC Block Lens
Protection Class	: IP66
Impact Resistance Class	: Aluminum Housing: IK10 & Lens : IK09
Length	: 624 mm
Width	: 143 mm
Height	: 167 mm
Weight	: 4 kg

EX-PROOF



TL-EX-LNR-225

Specifications / Dimensions

Light Source	: SMD Power LED
Input Voltage	: 100 V - 305 V AC 50 Hz
Power Range	: 150 - 225 W
Power Factor	: ≥ 95
Luminaire Efficiency	: 135-165 lm/W
Color Temperature	: 2700-6500 Kelvin
Lifespan	: >60.000 hours
Housing	: Special Aluminium Alloy
Operating Temp	: -40°C - +50°C / +70°C
Cooling	: Specially Designed Cooling Panel
Light Distribution	: 30° - 60° - 90° - 30°x70° - 60°x90° 70°x145°80°x155° - 90°x120° - 120° - 140°
Optic Interface	: PC Blok Lens
Protection Class	: IP66
Impact Resistance Class	: Aluminum Housing: IK10 & Lens : IK09
Length	: 624 mm
Width	: 143 mm
Height	: 167 mm
Weight	: 4 kg



Labeling of explosion proof equipment

According to ATEX directives

Application	Equipment Group	Equipment Categorized by		Level of Protection		Equipment Category	Explosive Atmosphere Contains	Zone Classification	
		Required Performance in the Event of an Explosive Atmosphere	Remain Functional	Very High	Two Faults				
Mining	I	Required Performance in the Event of an Explosive Atmosphere	Remain Functional	Very High	Two Faults	M 1	Gas		
			De-energised	High	Normal Operation	M 2	Dust		
Other Industries	II	Expectancy of the Occurrence of an Explosive Atmosphere	Continuously for Long Periods or Frequently	Very High	Two Faults	1	Gas		Zone 0
			Occasionally	High	One Fault	2	Dust		Zone 20
							Dust	Zone 21	
			Unlikely or Infrequently and for a Short Period	Normal	Normal Operation	3	Gas	Zone 2	
						Dust	Zone 22		

Examples

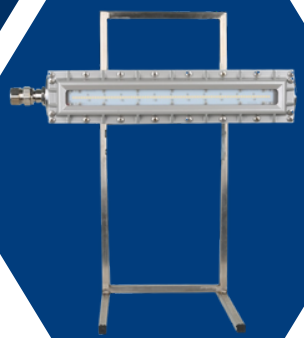
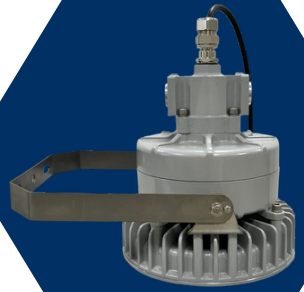
Complies with European Directive: **CE**
 Notified Body Number: **0158**
 Specific Marking for Explosion Protection: **Ex**

II 2G Ex d IIC T6 Gb
 II 1D Ex ta IIIA T80°C Da

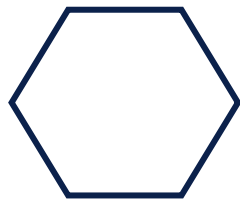
Type of Environment	Group & Class	Hazardous Material in the Atmosphere				Temperature Class			
Mines	I	Firedamp	Temperatures according to coal dust accumulation on equipment (< 150°C for coal mines or < 450°C for not coal mine tunnels)						
Explosive Gases	IIA	Ammonia Methane Ethane Propane	Ethanol Cyclohexane n-Butane	Petrol Diesel Fuel Fuel Oil n-Hexane	Acetal-dehyde				
	IIB	City Gas Acrylic nitrile	Ethylene Ethylen oxide	Ethyl glycol Carbon hydrogen	Ethyl ether				
	IIC	Hydrogen	Acetylene			Carbon disulphide			
Explosive Dusts	III	A	Flammable fibers	Attention: this list is only a selection of possible flammable mediums and is not complete!					
		B	Non-conductive dust						
		C	Conductive dust						
		For dust explosion proof, the max. surface temperature is directly shown (e.g. T80°C)		T1 <450° C	T2 <300° C	T3 <200° C	T4 <135° C	T5 <100° C	T6 <85° C

Protection Symbol	Zones			Type of Protection
	0	1	2	
d		•	•	Flameproof enclosure
e		•	•	Increased safety
i	ia	•	•	Intrinsic safety
	ib	•	•	
	ic	•	•	
m	ma	•	•	Moulding
	mb	•	•	
	mc	•	•	
o	•	•	Oil immersion	
q	•	•	Powder filling	
n	nA	•	•	Non-sparking Enclosed break Restricted Limited energy
	nC	•	•	
	nR	•	•	
	nL	•	•	
p	px	•	•	Pressurised enclosure
	py	•	•	
	pz	•	•	
Op	Op is	•	•	Optical radiation
	Op pr	•	•	
	Op sh	•	•	
Protection Symbol	Zones			Type of Protection
	20	21	22	
tD	ta	•	•	Protection by enclosure
	tb	•	•	
	tc	•	•	
mD	maD	•	•	Encapsulation
	mbD	•	•	
	mcD	•	•	
iD	iaD	•	•	Intrinsic safety
	ibD	•	•	
	icD	•	•	
pD	•	•	Pressurised enclosure	

Zone Classification/Equipment Category	Equipment Protection Level (EPL)		
Zone 0/1G	Ga	Gb	Gc
Zone 1/2G			
Zone 2/3G			
Zone 20/1D	Da	Db	Dc
Zone 21/2D			
Zone 22/3D			
NA/M1	Ma		
NA/M2	Mb		



TechLED Lighting Systems



TECHLED

Techled Elektronik San. Tic. A.Ş.



Contact Details:

E-mail: 

info@techled.com.tr

Social Media: 

techledelektronik 

techled-elektronik 

Website: 

www.techled.com.tr

Telephone: 

+90 216 386 8050

Fax: 

+90 216 386 8051

Address: 

Fatih Mahallesi, Yakacık Caddesi Türker
Tesisleri, PK34885 No:17/3 Samandıra -
Sancaktepe/istanbul



www.techled.com.tr

For detailed information,
you can visit our website
by scanning the QR code.